

AREA MAP

Wild West Gold Corp. has been exploring the Bralorne Camp for 15 years.

TALISKER TSX: TSK
talisker RESOURCES

TALISKER TSX: TSK
talisker RESOURCES

AVINO TSX: ASM
AVINO
SILVER & GOLD MINES LTD

ENDURANCE TSX: EDG
ENDURANCE GOLD
CORPORATION

WILD WEST GOLD
BRALORNE NORTH

WILD WEST GOLD
BRALORNE SOUTH

 PAST PRODUCER
 PRODUCER

TORR RESOURCES
Torr Resources
CORPORATION

BRALORNE
4.2 Moz Au @ 17.7 g/t
average grade

TALISKER TSX: TSK
talisker RESOURCES

FIRST COBALT TSX: FTSSF
FIRST COBALT

WILD WEST GOLD
BRETT

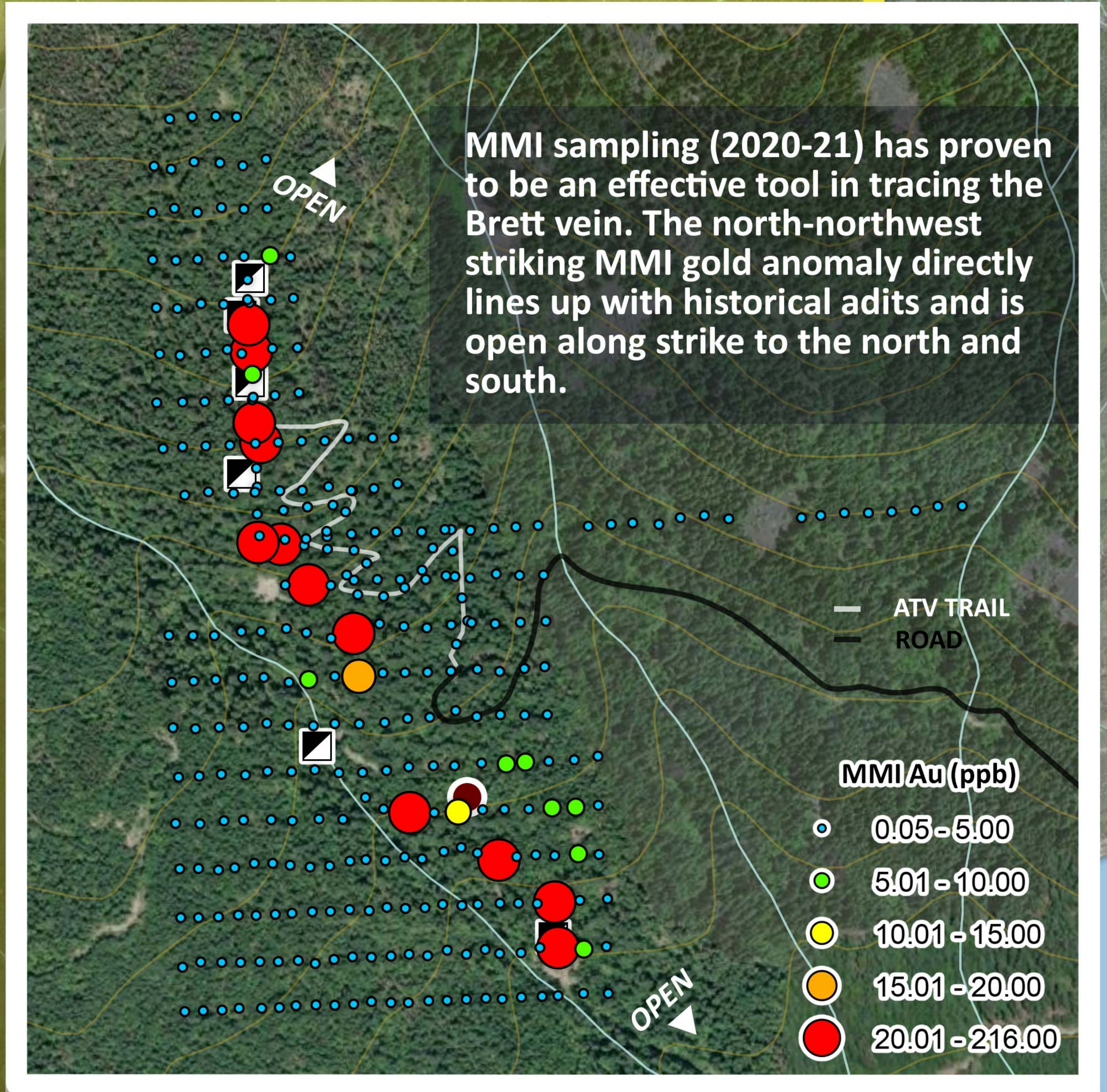
WILD WEST GOLD CORP.

map frame



0 2.5 5 7.5 10 km

TARGET: A ribboned quartz vein that averages 16 feet in width, shares similar geology to Bralorne-Pioneer and contains pockets of spectacular gold.



ULTRAMAFIC ROCKS

MAG LOW
MAG HIGH



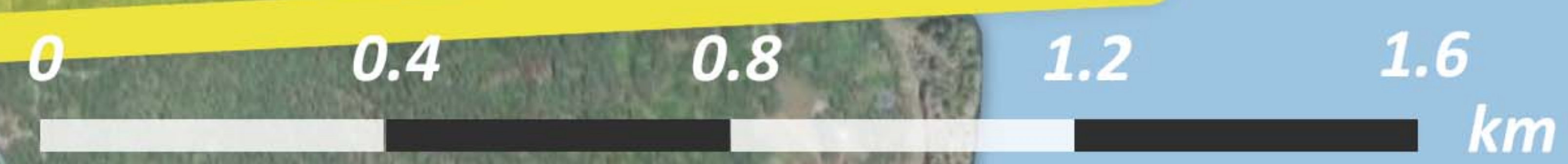
The 2021 Drone Mag survey identified geological contacts within the area. The Brett vein can be traced along a north-northwest lineament that has a western mag low (blue-green) and an eastern mag high (orange-red).

- ▣ ADITS
- ⚒ PAST PRODUCERS
- SHOWINGS
- MILLSITE

LUCKY JANE ⚒
McGILLIVRAY ○

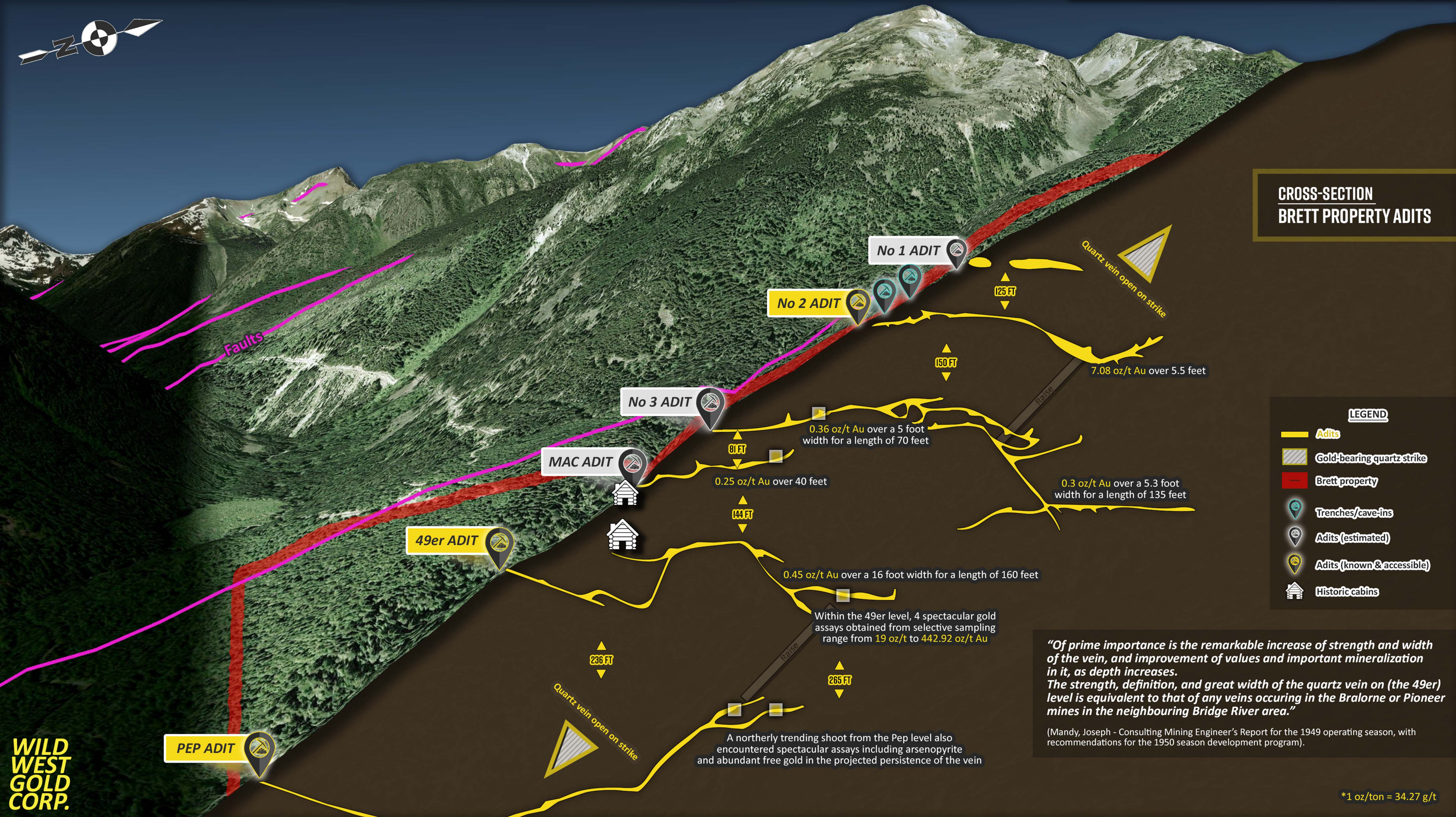
WILD WEST GOLD CORP.

Anderson Lake





CROSS-SECTION BRETT PROPERTY ADITS



LEGEND

- Adits
- Gold-bearing quartz strike
- Brett property
- Trenches/cave-ins
- Adits (estimated)
- Adits (known & accessible)
- Historic cabins

"Of prime importance is the remarkable increase of strength and width of the vein, and improvement of values and important mineralization in it, as depth increases. The strength, definition, and great width of the quartz vein on (the 49er) level is equivalent to that of any veins occurring in the Bralorne or Pioneer mines in the neighbouring Bridge River area."

(Mandy, Joseph - Consulting Mining Engineer's Report for the 1949 operating season, with recommendations for the 1950 season development program).

*1 oz/ton = 34.27 g/t