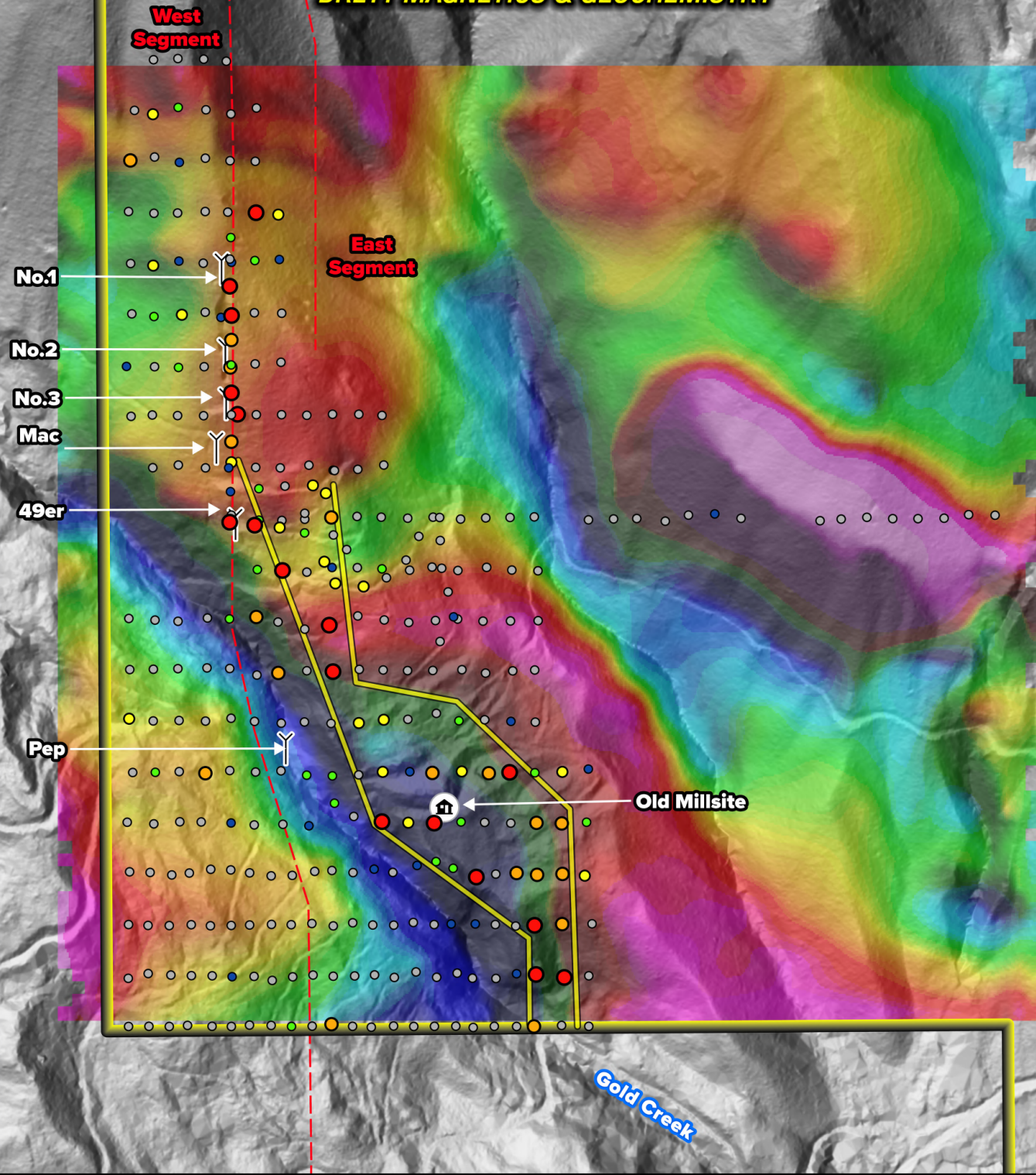


**WILD WEST GOLD
BRETT MAGNETICS & GEOCHEMISTRY**

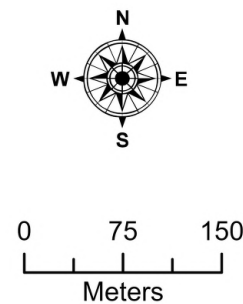


Legend

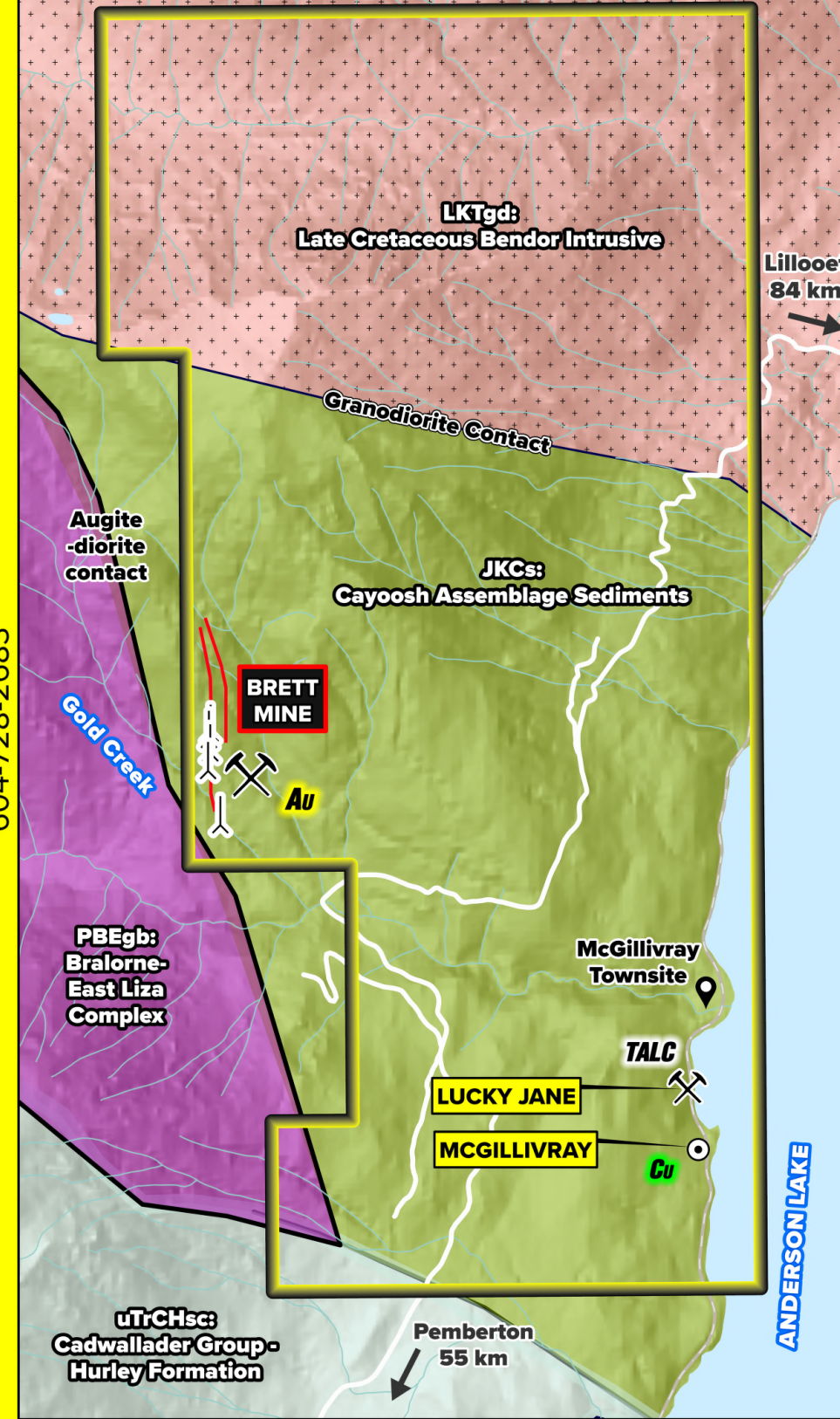
- Adits
 - Brett Claims
 - Historic Estimated Vein
 - Location (East and West Segments)
 - Exploration Target Area
 - Old Millsite
- | 2020-2021_Brett_MMI Au_ppb |
|----------------------------|
| 0.05 - 0.60 |
| 0.61 - 1.00 |
| 1.01 - 1.40 |
| 1.41 - 2.50 |
| 2.51 - 7.00 |
| 7.01 - 216.00 |
- First Vertical Derivative

The red dashes on the map show the assumed path of the Brett vein from historical maps. Levels No 1, 2, and 3 were fully within the vein. In contrast, the Mac level intersected the vein after 55 meters, the 49er after 73 meters, and the Pep adit reached it only after 280 meters. These variations suggest a deviation from the presumed north-south trajectory as the vein approaches Gold Creek.

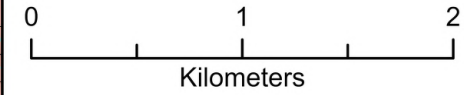
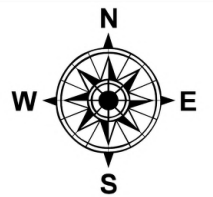
Recent geochemical (MMI) and geophysical (drone magnetics) surveys by Wild West in 2020-21 indicate a potential jog in the vein's path. While the vein typically follows a north-south trending magnetic contact with anomalous MMI Au values from Levels 1 to 3, it seems to veer southeast near the Mac and 49er levels. This deviation extends about 400 meters before the vein realigns to a north-south orientation for an additional 200 meters up to the Brett property border. This area, highlighted in yellow on the map, is a significant exploration target, particularly given underground indications of greenstone (the host rock of the gold-quartz veins at the Pioneer Mine).



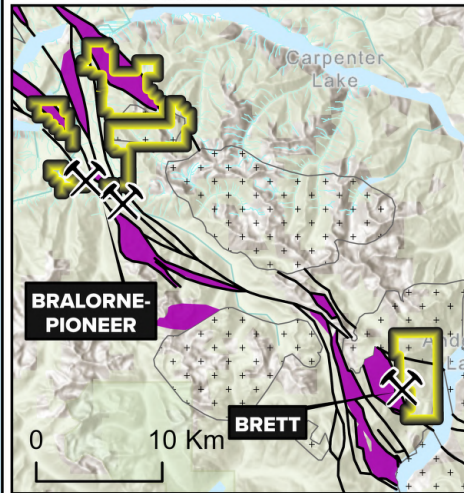
**WILD WEST GOLD
BRETT OVERVIEW**



- | | | | |
|------------------------|---|--|-------------------------|
| Brett Property | Upper Triassic Cadwallader Group (Hurley Formation) | Late Carboniferous - Early Permian Bralorne-East Liza Complex (Augite diorite) | Past Producer; Producer |
| Jurassic to Cretaceous | Intrusive Rocks | Faults | Showing |
| Cayoosh Assemblage | Late Cretaceous Bendor Intrusions | | Adit |
- Vein (approximate location)

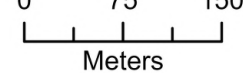


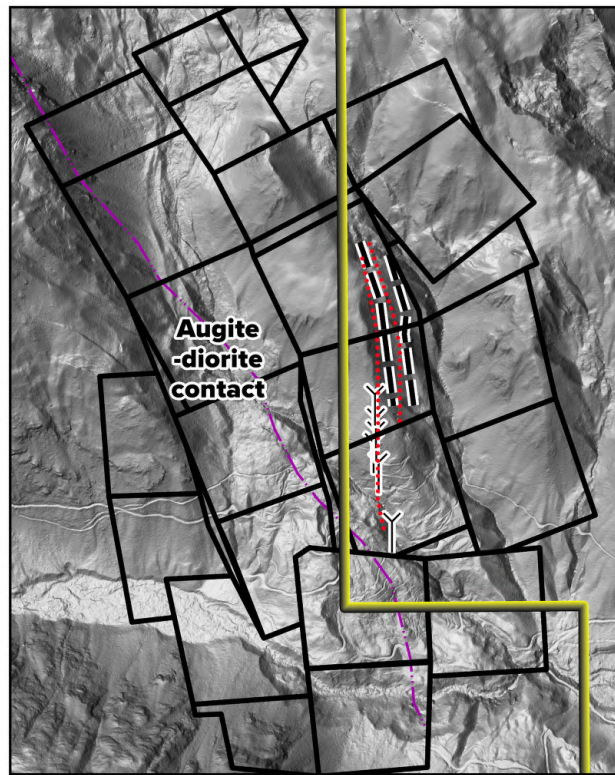
Bralorne-McGillivray Pass Fault Zone



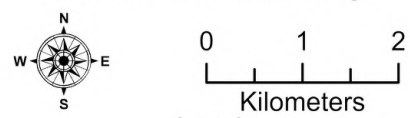
The Brett property is located on the Bralorne-McGillivray Pass Fault Zone, 30 km southeast of the Bralorne-Pioneer Mines. This fault zone is a significant tectonic boundary in the Bendor Range and plays a key role in the region's gold mineralization.

Previous development at Brett consists of six adits driven into a 4 to 7 meter wide quartz vein. Historical data from maps indicate the presence of high-grade gold pockets, with samples ranging from trace to 442.92 oz/ton (13,776.1 g/t).





Historical Claims Map

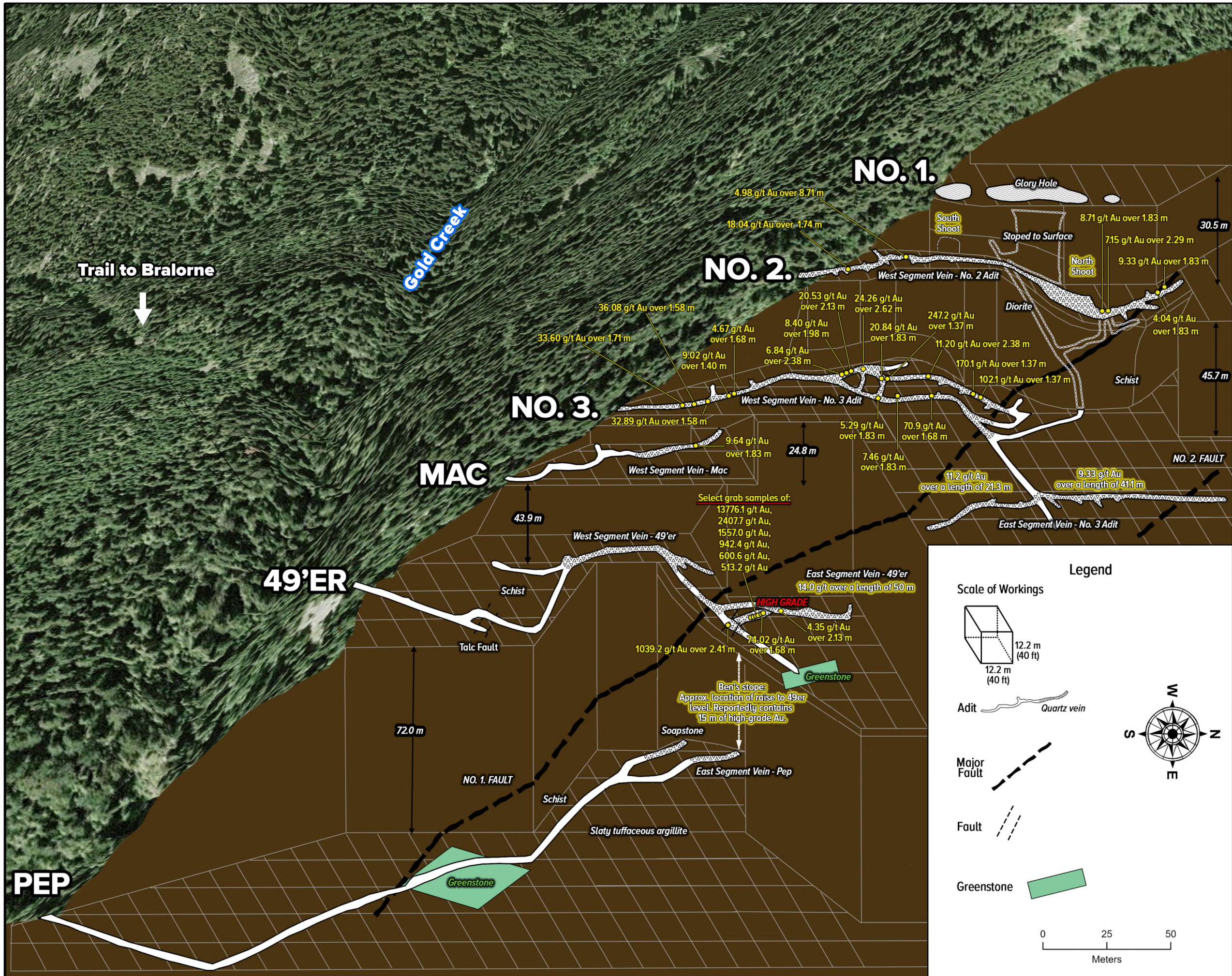


- Legend**
- Brett Claims
 - Faults
 - Augite-diorite contact
 - Approx. location of vein (East & West segments)
 - Historical Mineral Claims
 - Adits

The Brett vein, 4 to 7 meters wide, is situated within a sedimentary formation comprising schist, chert, phyllite, limestone, and quartzite. It flanks a diorite dike 61 meters to the west, strikes north, and dips 65-70° west. The vein features sparse pyrite mineralization, occasional free gold, and ribboning consisting of closely spaced shear planes smeared with black argillaceous material. Workings indicate a horizontal and vertical continuity of at least 550 m and 200 m.

- Adit Level Summaries:**
- No. 1 Tunnel:** ~107 m long. A Glory Hole was excavated along the vein. No assay maps are available for this section.
 - No. 2 Tunnel:** Located 38 m vertically below the No. 1 level. 152 m long. Follows the vein on the hanging wall (west side) of the fault. Two ore shoots identified: South (closest to the portal) and North.
 - No. 3 Level:** 45.7 m below the No. 2 level. Followed the vein for ~219 m. At ~91 meters from the portal, the vein splits. Fault No. 1, intersected at ~145 m. The average gold content of 112 samples from the hanging wall (west vein segment) is 7.68 g/t Au. Beyond Fault No. 1, the vein reappears about ~30 m to the east. At the south end of the east segment, gold averages 11.20 g/t Au over ~21 m. To the north of the cross-cut, it averages 9.33 g/t Au over ~41 m.
 - Mac Level:** Situated 24.8 m below the No. 3 level. 85 m long. Drifted on vein for last half with one significant assay - 9.64 g/t Au over 1.83 m.
 - 49er Level:** Located 43.9 m below the Mac level. 207 m long with ~104 m drifted along the vein. **Highest grades encountered just east of No.1 fault.**
 - Pep Level:** Positioned 72 m below the 49er level. ~317 meters long. The vein is followed from ~268 to ~305 meters within the tunnel. This level experienced caving problems.

Throughout the mine, most levels revealed pockets of spectacular gold. In the Pep and 49er levels, a high-grade area occurs on the footwall side of the No. 1 fault, with select grab samples reaching up to 442.9 oz/ton (13,776.1 g/t) Au.



Legend

Scale of Workings

12.2 m (40 ft)

12.2 m (40 ft)

Adit Quartz vein

Major Fault

Fault

Greenstone

Scale: 0 25 50 Meters