

COPPER CROWN

Michael R. Lee President
604-728-2683

Wild West Gold Corp.
An Exploration Company

The **Copper Crown Project** contains a significant tonnage of Ag, Cu, and Zn in 6 well mineralized structures - **Ruby, Copper Crown, Lake View, Schorn, Rainstorm, and Eureka**. Extensive work (consisting of drilling, cross cuts, drifts, and shafts) have been completed on the Ruby and Copper Crown zones. Only limited drilling has been completed on the Schorn, Lake View, Eureka, and Rainstorm zones. It is likely that the mineralized structures are peripheral to an underlying mineralized intrusion. Areas to the west and east of the known zones are covered by overburden and have not been tested.



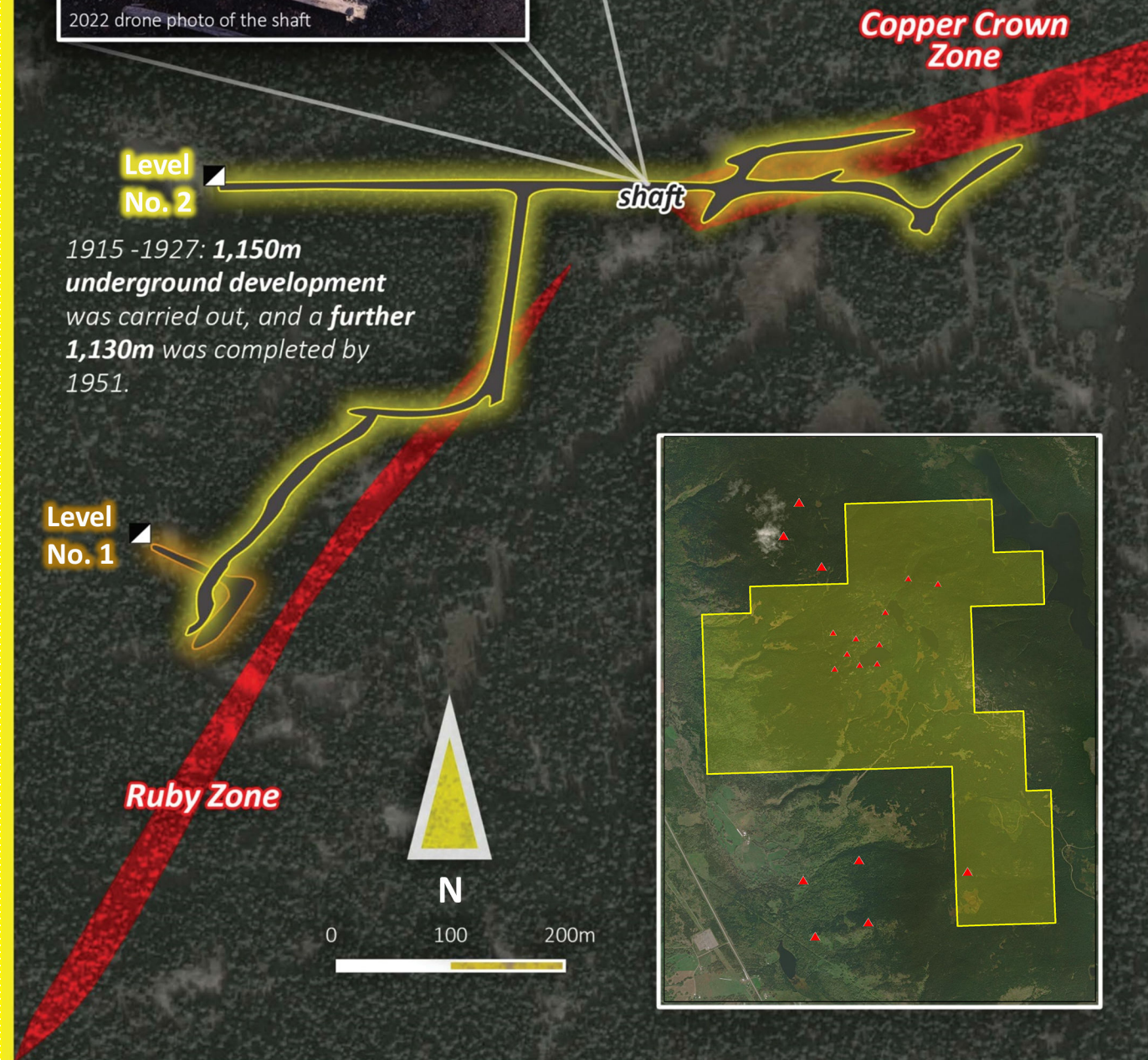
○ Crown Grants are >100 years old. All are inactive (gazetted), leaving Wild West with 100% ownership.

0 200 400m

- Mineralized Zones
- Tunnels
- Crown Grants

Cu/Au exploration 50 years ago located VMS Cu/Zn at Copper Crown with Cu/Ni ratios similar to Noranda VMS deposits.

COPPER CROWN



Level No. 2
1915 -1927: 1,150m underground development was carried out, and a further 1,130m was completed by 1951.

Level No. 1

Most of the historical work has been directed towards the **Ruby and Copper Crown zones**. These contain a mineral reserve of **317,485 tonnes @ 30.16 g/t Ag, 0.38% Cu, and 4.23% Zn** with a further 720,000 tonnes of lower grade material at depth.

- Mineralized Zones
- No. 1 Level
- No. 2 Level

www.wildwestgold.net

WILD WEST GOLD

COPPER CROWN PROPERTY

OMINECA MINING DIVISION

Blue Lagoon

Big Onion (porphyry Cu-Mo). Inferred 8.6 million tonnes @ 0.269% Cu. Indicated: 81.1 million tonnes @ 0.303% Cu.

Harvest Gold

Emerson (porphyry Cu). Initial drill program discovers a Cu-Au porphyritic system.

Standard Drilling

El Toro (porphyry Cu). Several copper showings run >1% Cu. Only received 3800 m of drilling.

Aurwest Resources

Stars (porphyry Cu). 2018 drill results include 204 m @ 0.45% Cu (DD185S004) and 405m@0.20% Cu.

Universal Copper:

Polar (porphyry Cu-Mo). Inferred 139.3 million tonnes @ 0.29% Cu. Indicated: 152.3 million tonnes @ 0.32% Cu. 2021 drill results include 432m@0.42% Cu (21-PC-131).

▲ Past Producer

▲ Developed Prosp.

▲ Prospect

▲ Showing

MAP FRAME

Vancouver

- Wild West
- Aurwest
- Copper Mountain
- Blue Lagoon
- Equity Metals
- Finlay Metals
- Harvest Gold
- General Copper Gold
- Geologica
- J2 Syndicate
- Quartz Mountain
- Rockbridge
- Standard Drilling
- Sun Summit Metals
- Teck
- Universal Copper
- Vizsla Copper
- 79 Resources



● **Granisle Mine**
Produced >50 million tonnes @ 0.43% Cu.

● **Blue Lagoon**
Dome Mountain (Au quartz veins). Produced 11,621 ounces of Au from 31,000 tonnes (grade of 11.7 g/t Au). Recent drilling includes 11.02 g/t Au and 2.31% Cu over 5.65mon the Boulder Vein.

● **Geologica Resources**
Topley Project (VMS and porphyry Cu-Mo). Previously worked by Antafagasta, Bethlehem Copper, Hudson Bay, Noranda, and Taseko. Best drill intercept was 75 m @ 0.24%Cu and 0.06%Mo.

● **Lennac Lake**
Porphyry Cu. Prospect with drill intercept including 178m@0.23% Cu.

● **General Copper Gold**
Topley Richfield (VMS). 181,420 tonnes @ 4.25 g/t Au and 191.96 g/t Ag. Drilled IP targets in September, 2022. Results pending.

● **Wild West Gold**
Copper Crown (VMS). Inferred 317,485 tonnes @ 30.16 g/t Ag, 0.38% Cu, and 4.23% Zn.

● **Quartz Mountain Res.**
Maestro (porphyry Cu-Mo with precious metal potential). Bulk tonnage potential with 2008 drilling intercepts including 120 m @ 0.65 g/t Au and 18.9 g/t Ag. Awaiting drill permits.

● **Sun Summit Metals**
Buck (bulk tonnage Au, Ag). Recent drill highlights include 7.0 m @ 6.4 g/t Au, 27.6 g/t Ag, and 1.1% Zn (BK22-083), 187 m @ 0.71 g/t Au, 5.6 g/t Ag, and 0.62% Zn (BK21-033), and 109m@1.07 g/t Au, 5.5 g/t Ag, and 0.65% Zn (BK21-017).

● **Equity Silver Mine**
Produced 33.8 million tonnes @ 0.51 g/t Au, 65 g/t Ag, 0.25% Cu.

● **Equity Metals**
Equity Metals: Silver Queen (Cu-Mo porphyry and epithermal veins). December 2022 resource estimate with a significant expansion of reserves. Inferred: 1.92 million tonnes @ 167 g/t Ag, 0.82 g/t Au, 0.23% Cu, 0.5% Pb, and 2.0% Zn. Indicated: 3.455 million tonnes @ 189 g/t Ag, 2.13 g/t Au, 0.24% Cu, 0.6% Pb, and 3.5% Zn.

Houston