

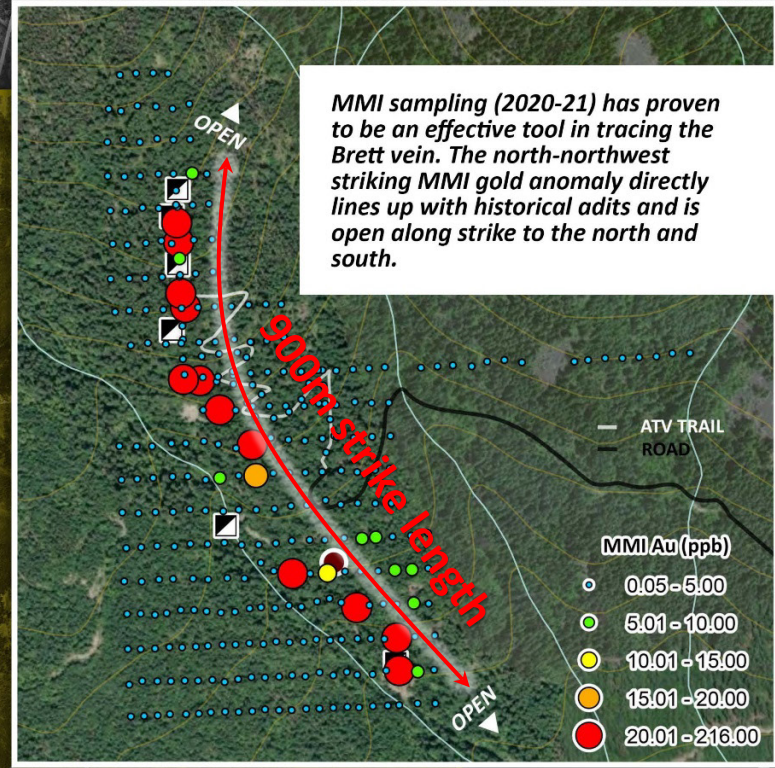
BRETT

Michael R. Lee President  
604-728-2683

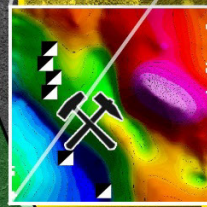
Wild West Gold Corp.  
An Exploration Company

**WILD WEST GOLD**  
BRETT MMI, GEOLOGY & MAG.

**TARGET:** Target: A >900m long, 4-7m wide ribboned quartz vein with select grab samples of up to 442.92 oz/ton Au. Located along the southeastern projection of the Cadwallader Break with similar geology to veins in the Bralorne-Pioneer mines.



MMI sampling (2020-21) has proven to be an effective tool in tracing the Brett vein. The north-northwest striking MMI gold anomaly directly lines up with historical adits and is open along strike to the north and south.



**BRETT**

ULTRAMAFIC SERPENTINITE

The 2021 drone mag survey identified geological contacts within the area. The Brett vein can be traced along a north-northwest lineament that has a western mag low (blue-green) and an eastern mag high (red-purple).

CADWALLADER GROUP

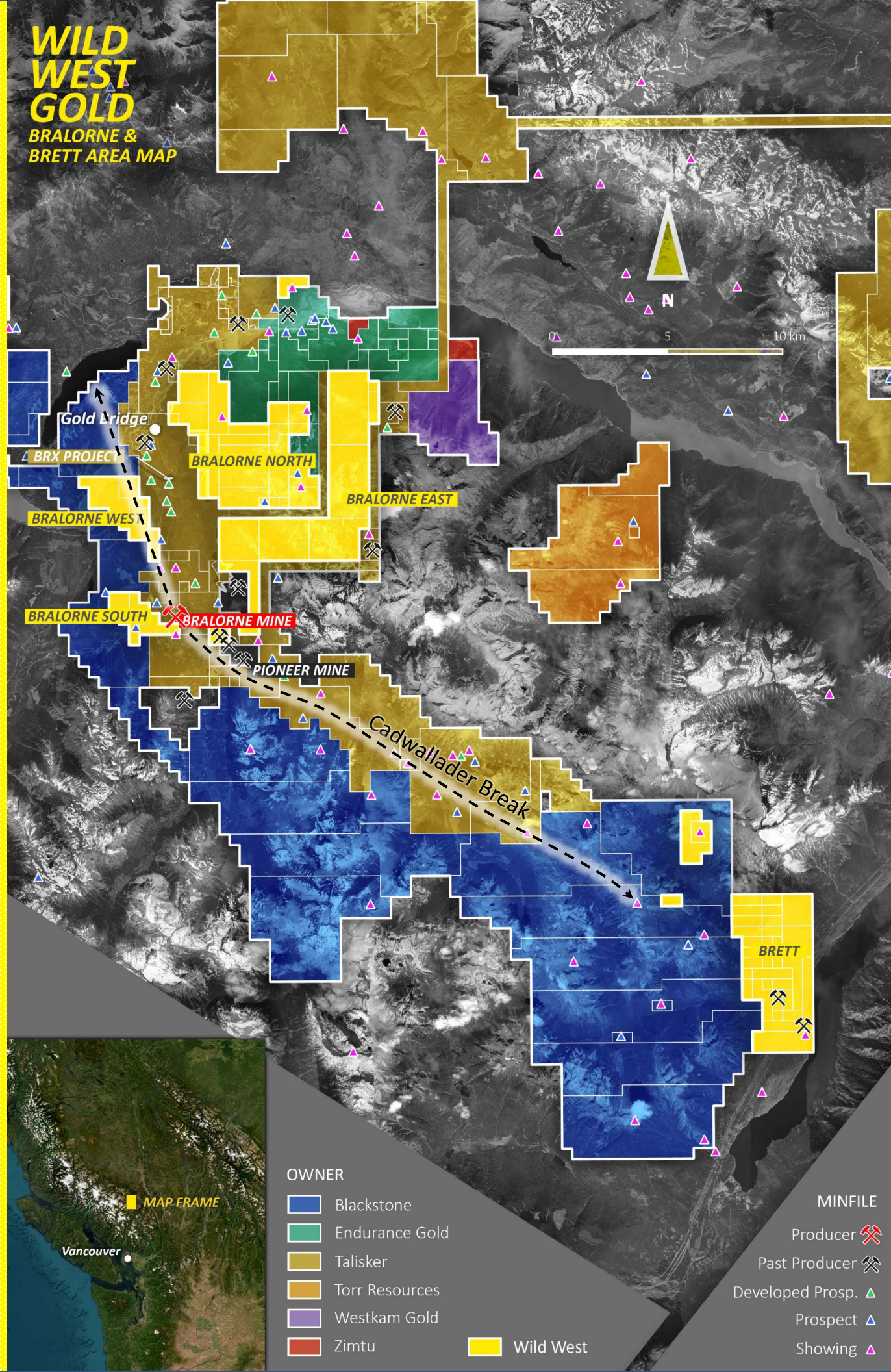
- Past Producer
- Showing
- Faults
- Adits
- Mag high
- Mag low



0 0.9 1.8 km

Anderson Lake

**WILD WEST GOLD**  
BRALORNE & BRETT AREA MAP



OWNER

- Blackstone
- Endurance Gold
- Talisker
- Torr Resources
- Westkam Gold
- Zimtu
- Wild West

MINFILE

- Producer
- Past Producer
- Developed Prosp.
- Prospect
- Showing

www.wildwestgold.net

BRETT





## High gold assay reported by Cassiar Copperfields

Some of the highest precious metal assays ever recorded in Canadian mining are reported today by Cassiar Copperfields Ltd.

The assays are from recent drifting on the "49er" level

at elevation 3,120 feet in the Golden Contact mine at McGillivray Falls, seven miles east of the Pioneer gold mine.

These assay reports have been made by Coast Eldridge Engineers & Chemists Ltd. of Vancouver.

A 60-foot length over a full drift width in a north branch of the main vein has assayed over equal 5-foot intervals an average of 25.24 ounces gold, together with 12.16 ounces of silver per ton in the sulphides. With the inclusion of free gold the average was increased to 63.07 ounces gold per ton.

One spectacular face, over a full drift width, assayed 442.92 ounces gold, equivalent to \$15,502 per ton.

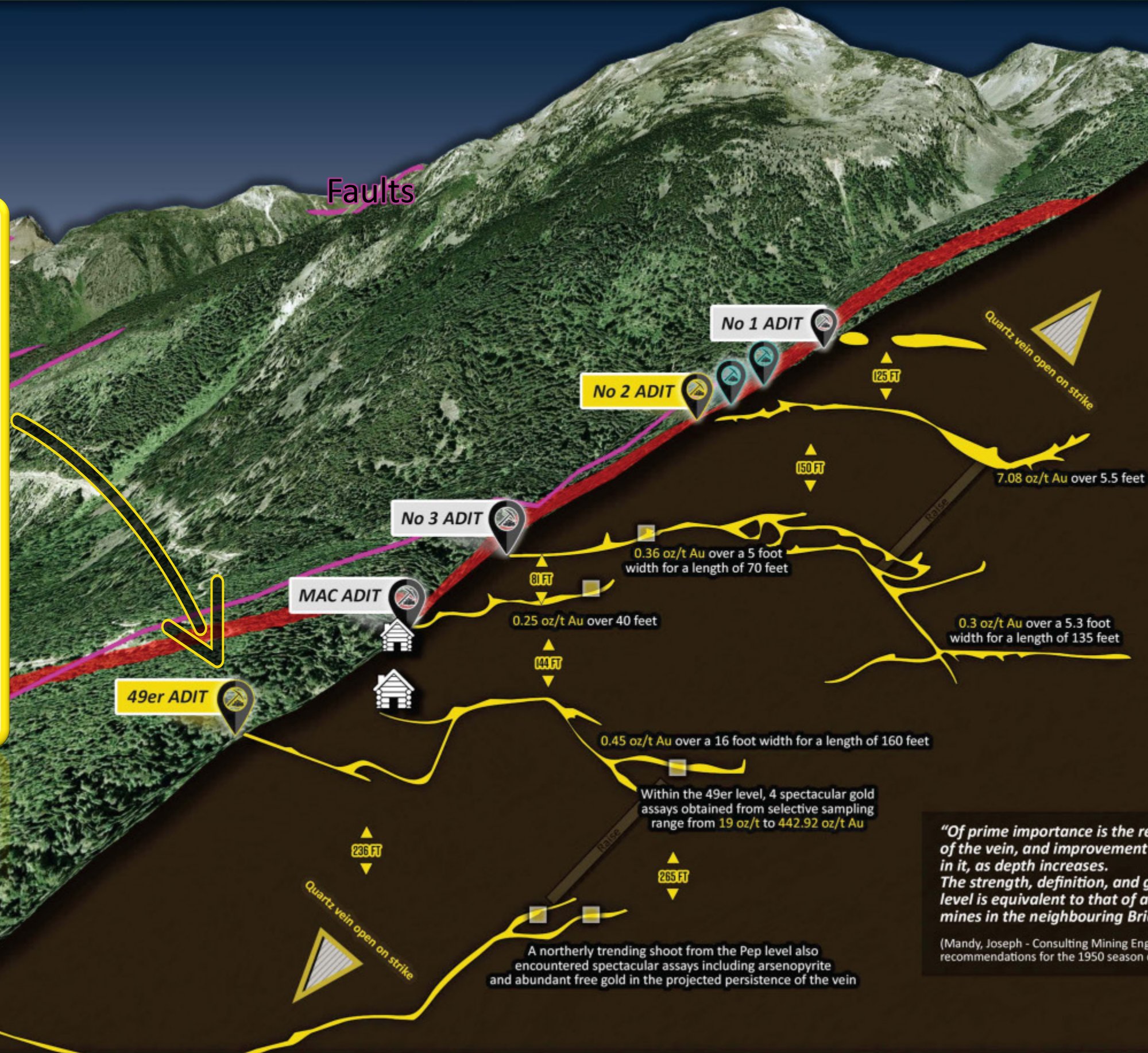
A northerly trending shoot from the "Pep" level, 265 feet vertically below the 49er level, has also encountered spectacular assays including abundant free gold in the projected position of persistence of the above vein.

Mill construction is nearing completion and operation may start in April.

THE PROVINCE FEB. 16. 1962

Faults

### CROSS-SECTION BRETT PROPERTY ADITS



- LEGEND**
- Adits
  - Gold-bearing quartz strike
  - Brett property
  - 📍 Trenches/cave-ins
  - 📍 Adits (estimated)
  - 📍 Adits (known & accessible)
  - 🏠 Historic cabins

*"Of prime importance is the remarkable increase of strength and width of the vein, and improvement of values and important mineralization in it, as depth increases. The strength, definition, and great width of the quartz vein on (the 49er) level is equivalent to that of any veins occurring in the Bralorne or Pioneer mines in the neighbouring Bridge River area."*

(Mandy, Joseph - Consulting Mining Engineer's Report for the 1949 operating season, with recommendations for the 1950 season development program).

\*1 oz/ton = 34.27 g/t