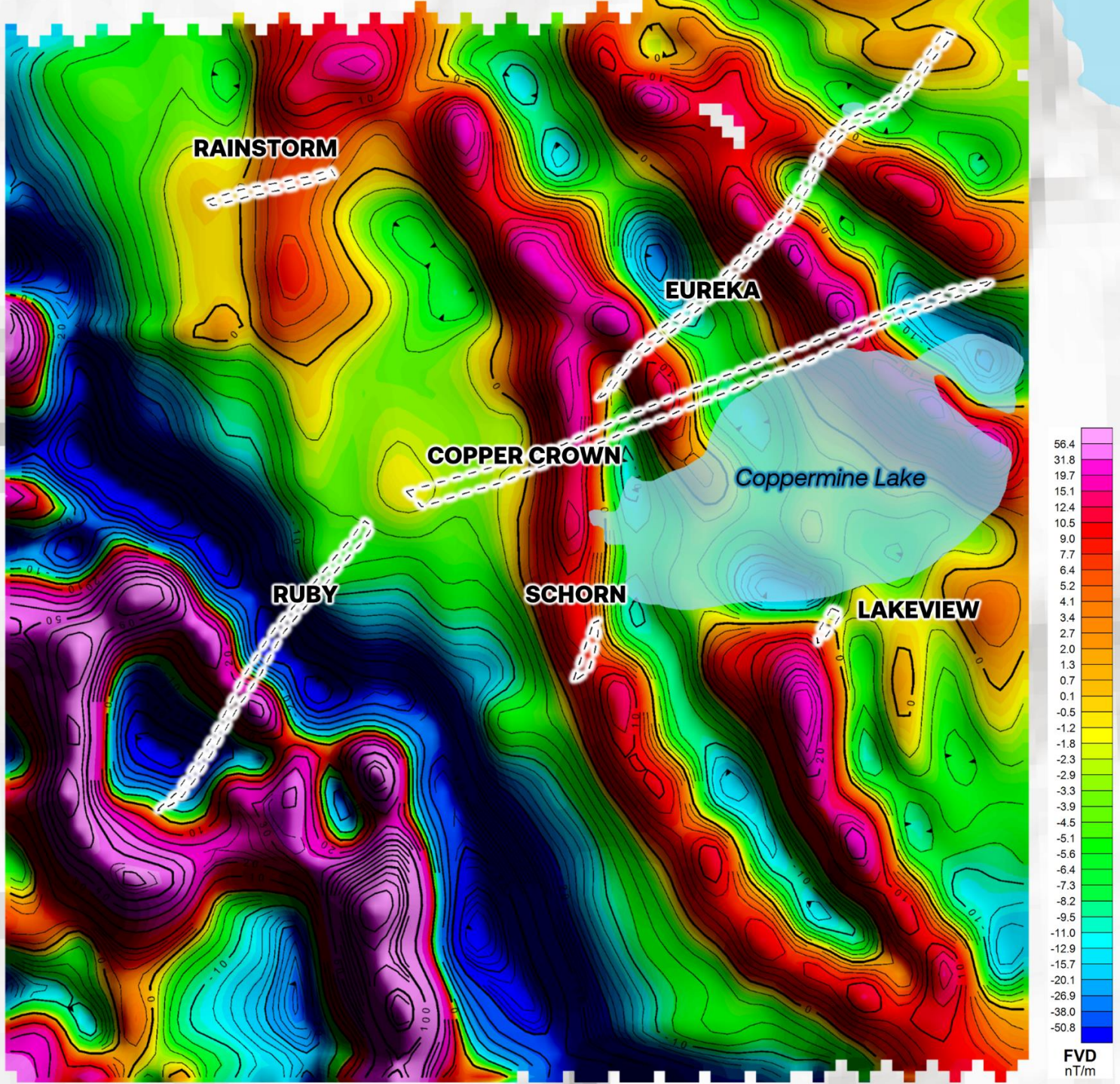


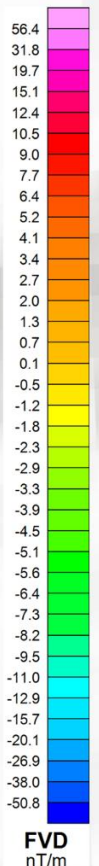
The 2022 Drone Magnetics survey identified a north-northwest trend in the geology, which is consistent with earlier mapping programs. The magnetic highs detected are attributed to north-striking quartz monzonite to mafic feldspar porphyry dikes.

2 magnetic low areas of interest are identified from within this survey:

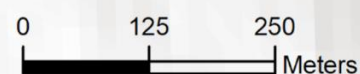
1. A circular magnetic low southwest of the Ruby Zone
2. A magnetic low underlying Coppermine Lake that cross cuts a linear magnetic high.



North Lake



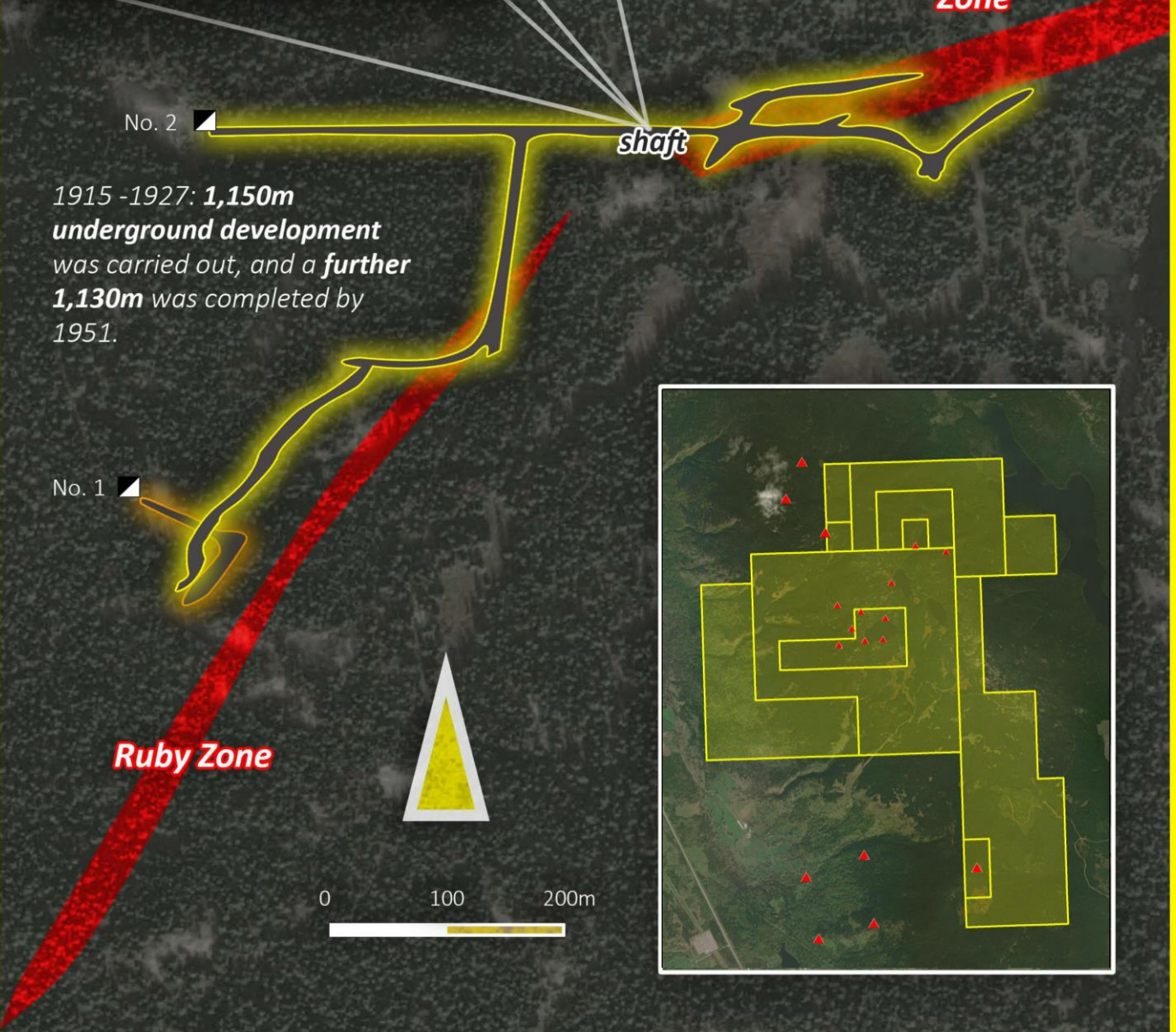
*First vertical derivative
DRONE MAG



--- MINERALIZED ZONE



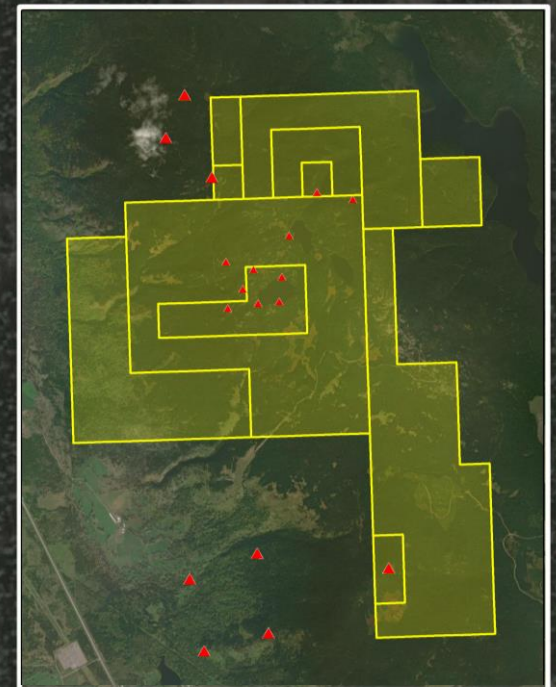
2022 drone photo of the shaft



1915 -1927: **1,150m** underground development was carried out, and a **further 1,130m** was completed by 1951.

Ruby Zone

Copper Crown Zone



Most of the historical work has been directed towards the **Ruby and Copper Crown zones**. These contain a mineral reserve of **317,485 tonnes @ 30.16 g/t Ag, 0.38% Cu, and 4.23% Zn** with a further 720,000 tonnes of lower grade material at depth.

- Mineralized Zones
- No. 1 Level
- No. 2 Level

COPPER CROWN

Michael Richard Lee, President
604-728-2683

Wild West Gold Corp.
An Exploration Company
www.wildwestgold.net

The Copper Crown project contains a significant tonnage of silver (Ag), copper (Cu), and zinc (Zn) across six well-mineralized structures: Ruby, Copper Crown, Lake View, Schorn, Rainstorm, and Eureka. Extensive work has been completed on the Ruby and Copper Crown zones, while limited drilling has been done on the remaining zones. The mineralized structures are possibly peripheral to an underlying mineralized intrusion.

2022 rock sampling confirmed the historical grades of these zones, with the results returning high-grade samples of gold (Au), silver (Ag), copper (Cu), and zinc (Zn).

2022 rock sample summary (27 samples):

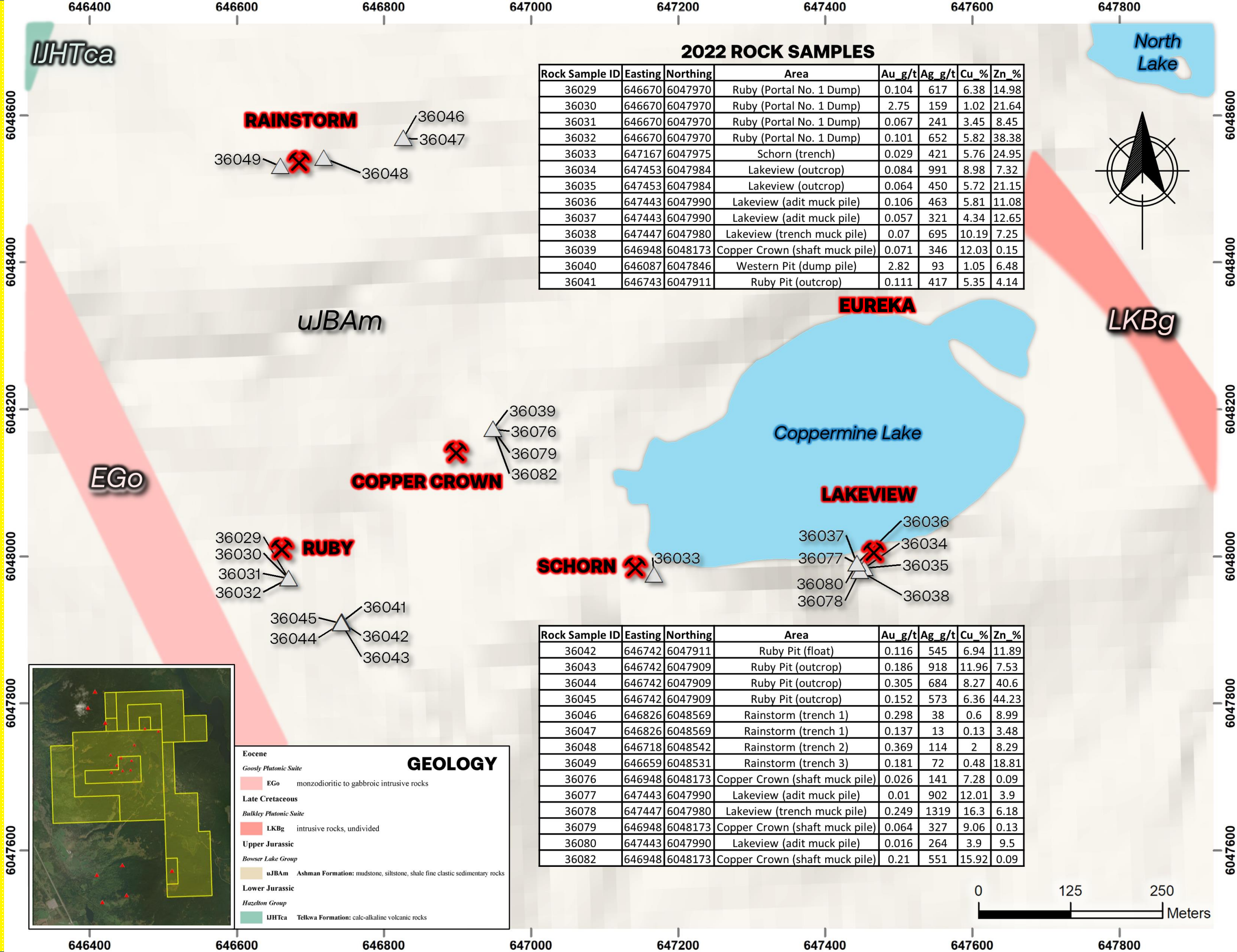
Gold (Au):
 Lowest: 0.01 g/t
 Average: 0.52 g/t
 Highest: 2.82 g/t

Silver (Ag):
 Lowest: 0.5 ppm
 Average: 108 ppm
 Highest: 1,319 ppm

Copper (Cu):
 Lowest: 0.01%
 Average: 2.24%
 Highest: 16.3%

Zinc (Zn):
 Lowest: 0.05%
 Average: 5.37%
 Highest: 44.23%

The presence of these ore-grade samples highlight the potential of the Copper Crown project. Further exploration and drilling in untested areas and underexplored zones is expected to uncover additional high-grade mineralization, improving the overall prospectivity of the project.



2022 ROCK SAMPLES

Rock Sample ID	Easting	Northing	Area	Au g/t	Ag g/t	Cu %	Zn %
36029	646670	6047970	Ruby (Portal No. 1 Dump)	0.104	617	6.38	14.98
36030	646670	6047970	Ruby (Portal No. 1 Dump)	2.75	159	1.02	21.64
36031	646670	6047970	Ruby (Portal No. 1 Dump)	0.067	241	3.45	8.45
36032	646670	6047970	Ruby (Portal No. 1 Dump)	0.101	652	5.82	38.38
36033	647167	6047975	Schorn (trench)	0.029	421	5.76	24.95
36034	647453	6047984	Lakeview (outcrop)	0.084	991	8.98	7.32
36035	647453	6047984	Lakeview (outcrop)	0.064	450	5.72	21.15
36036	647443	6047990	Lakeview (adit muck pile)	0.106	463	5.81	11.08
36037	647443	6047990	Lakeview (adit muck pile)	0.057	321	4.34	12.65
36038	647447	6047980	Lakeview (trench muck pile)	0.07	695	10.19	7.25
36039	646948	6048173	Copper Crown (shaft muck pile)	0.071	346	12.03	0.15
36040	646087	6047846	Western Pit (dump pile)	2.82	93	1.05	6.48
36041	646743	6047911	Ruby Pit (outcrop)	0.111	417	5.35	4.14

Rock Sample ID	Easting	Northing	Area	Au g/t	Ag g/t	Cu %	Zn %
36042	646742	6047911	Ruby Pit (float)	0.116	545	6.94	11.89
36043	646742	6047909	Ruby Pit (outcrop)	0.186	918	11.96	7.53
36044	646742	6047909	Ruby Pit (outcrop)	0.305	684	8.27	40.6
36045	646742	6047909	Ruby Pit (outcrop)	0.152	573	6.36	44.23
36046	646826	6048569	Rainstorm (trench 1)	0.298	38	0.6	8.99
36047	646826	6048569	Rainstorm (trench 1)	0.137	13	0.13	3.48
36048	646718	6048542	Rainstorm (trench 2)	0.369	114	2	8.29
36049	646659	6048531	Rainstorm (trench 3)	0.181	72	0.48	18.81
36076	646948	6048173	Copper Crown (shaft muck pile)	0.026	141	7.28	0.09
36077	647443	6047990	Lakeview (adit muck pile)	0.01	902	12.01	3.9
36078	647447	6047980	Lakeview (trench muck pile)	0.249	1319	16.3	6.18
36079	646948	6048173	Copper Crown (shaft muck pile)	0.064	327	9.06	0.13
36080	647443	6047990	Lakeview (adit muck pile)	0.016	264	3.9	9.5
36082	646948	6048173	Copper Crown (shaft muck pile)	0.21	551	15.92	0.09

GEOLOGY

- Eocene**
 - Goosly Plutonic Suite
 - EGo monzodioritic to gabbroic intrusive rocks
- Late Cretaceous**
 - Bulkley Plutonic Suite
 - LKBg intrusive rocks, undivided
- Upper Jurassic**
 - Bowser Lake Group
 - uJBAm Ashman Formation: mudstone, siltstone, shale fine clastic sedimentary rocks
- Lower Jurassic**
 - Hazelton Group
 - UHTca Telkwa Formation: calc-alkaline volcanic rocks

