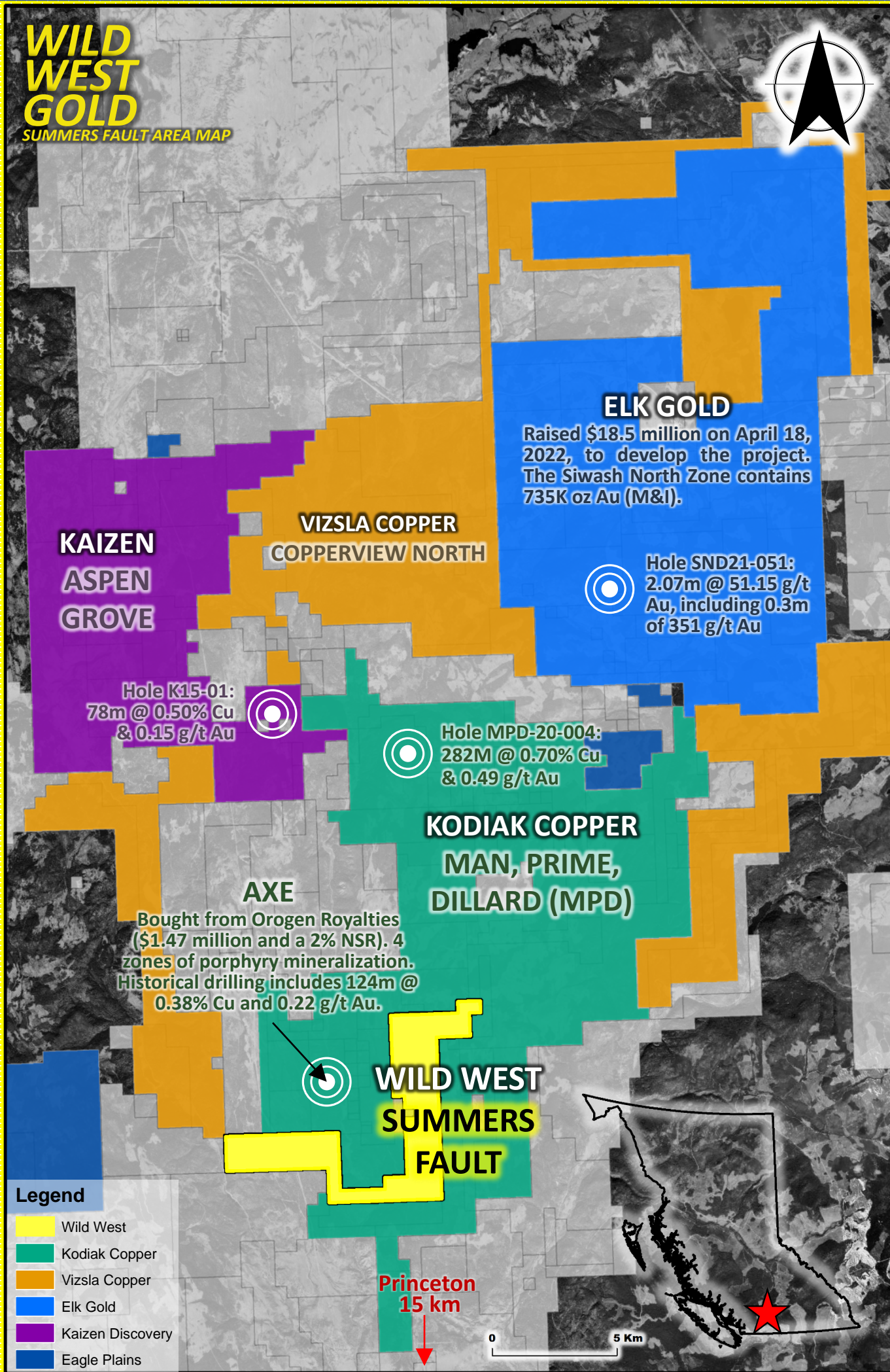


# SUMMERS FAULT

Michael R. Lee President  
604-728-2683

Wild West Gold Corp.  
An Exploration Company

**WILD  
WEST  
GOLD**  
SUMMERS FAULT AREA MAP



# SUMMERS FAULT

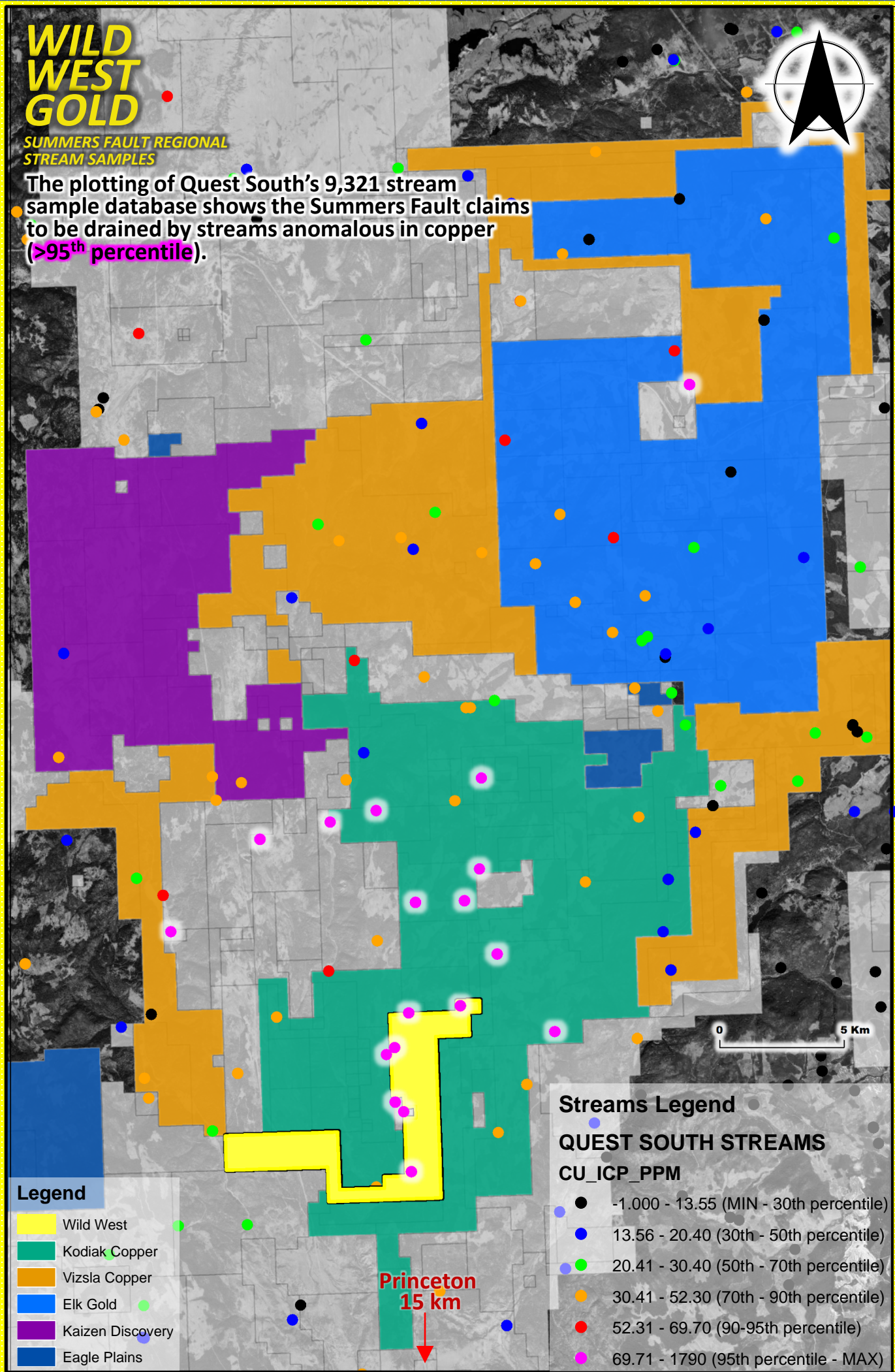
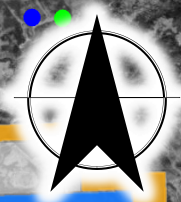
Michael R. Lee President  
604-728-2683

Wild West Gold Corp.  
An Exploration Company

## WILD WEST GOLD

### SUMMERS FAULT REGIONAL STREAM SAMPLES

The plotting of Quest South's 9,321 stream sample database shows the Summers Fault claims to be drained by streams anomalous in copper (>95<sup>th</sup> percentile).



**Legend**

- Wild West
- Kodiak Copper
- Vizsla Copper
- Elk Gold
- Kaizen Discovery
- Eagle Plains

**Streams Legend**

**QUEST SOUTH STREAMS**

**CU\_ICP\_PPM**

- 1.000 - 13.55 (MIN - 30th percentile)
- 13.56 - 20.40 (30th - 50th percentile)
- 20.41 - 30.40 (50th - 70th percentile)
- 30.41 - 52.30 (70th - 90th percentile)
- 52.31 - 69.70 (90-95th percentile)
- 69.71 - 1790 (95th percentile - MAX)

Princeton  
15 km

# SUMMERS FAULT

## WILD WEST GOLD

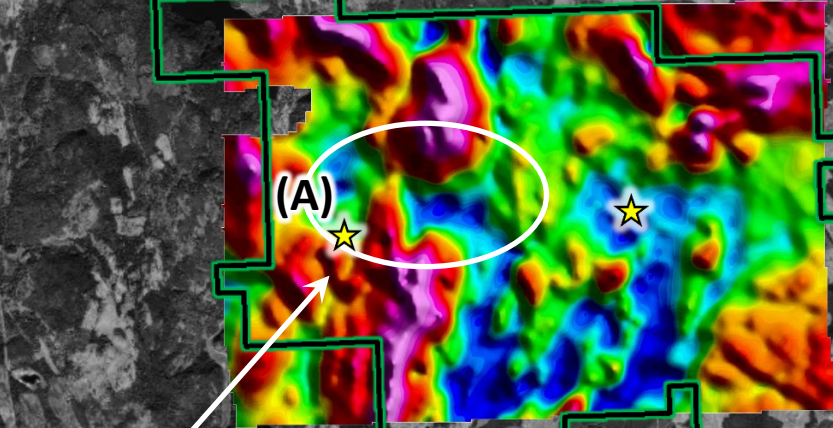
SUMMERS FAULT  
AIRBORNE MAGNETICS

Michael R. Lee President  
604-728-2683

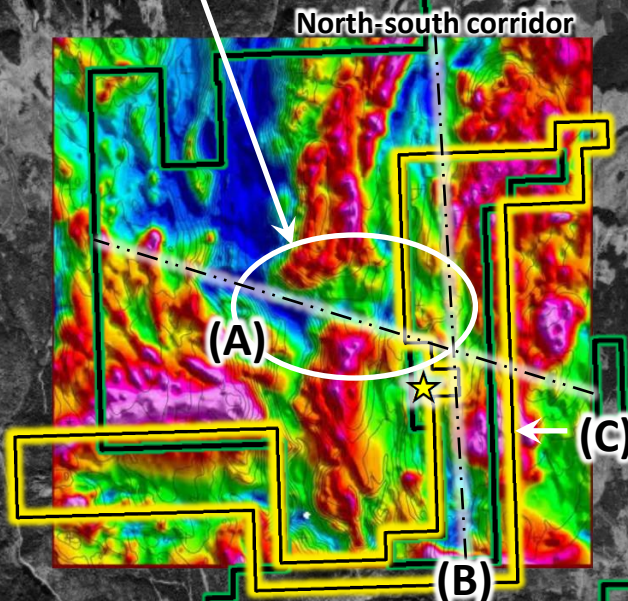
Wild West Gold Corp.  
An Exploration Company

(A)  
Kodiak Copper is exploring where linear magnetic highs are crossed by east-west magnetic lows at MPD's Gate Zone and Axe's 1516 zone (white circles)

(B)  
At Elk Gold, high grade gold mineralization occurs in a north-south corridor along the contact of the Nicola volcanics and Otter Lake intrusives.



Mag lows cross-cutting mag highs



Both of these trends are observed within Summers Fault where:

- A. an east-west magnetic low crosses at Kodiak's 1516 zone and projects through to the claims and;
- B. the north-south striking Rampart Creek fault runs along a volcanic/intrusive contact, AND;
- C. a strong circular magnetic high corresponds with anomalous Cu, Pb, and Zn MMI geochemistry.

Circular Mag high with anomalous Cu/Pb/Zn

### Legend

- ★ Gold occurrence
- Yellow outline Wild West
- Blue outline Elk Gold
- Green outline Kodiak Copper

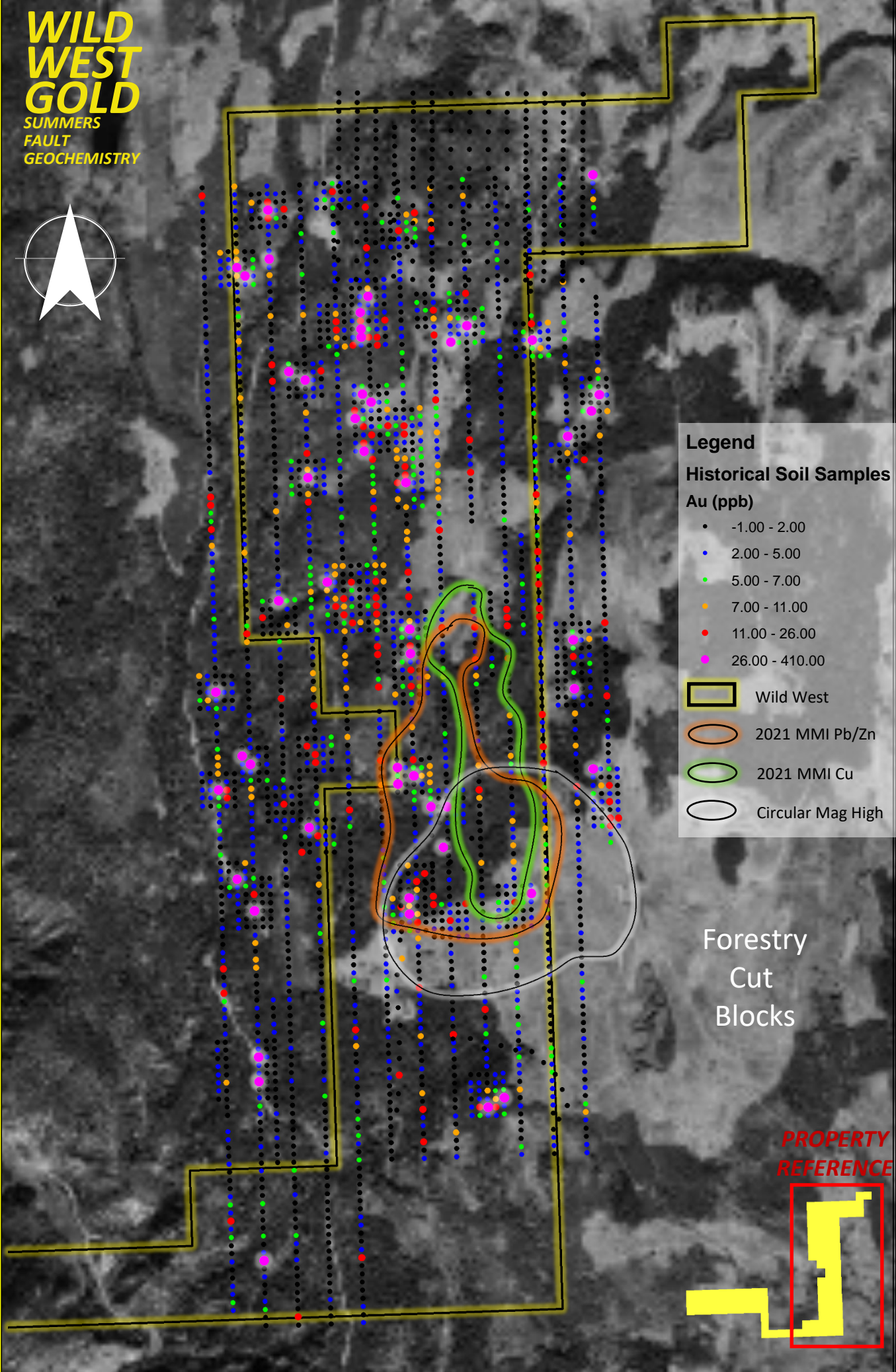
0 2.5 Km

# SUMMERS FAULT

Michael R. Lee President  
604-728-2683

Wild West Gold Corp.  
An Exploration Company

**WILD  
WEST  
GOLD**  
SUMMERS  
FAULT  
GEOCHEMISTRY



**Legend**

**Historical Soil Samples**  
Au (ppb)

- 1.00 - 2.00
- 2.00 - 5.00
- 5.00 - 7.00
- 7.00 - 11.00
- 11.00 - 26.00
- 26.00 - 410.00

- Wild West
- 2021 MMI Pb/Zn
- 2021 MMI Cu
- Circular Mag High

Forestry  
Cut  
Blocks

**PROPERTY  
REFERENCE**

